

CAPACITIES APPLY TO OPERATION ON FIRM LEVEL SURFACE

LOAD RADIUS FEET	MAIN BOOM OR EXTENSION CAPACITIES IN POUNDS			
	360° ROTATION		OVER FRONT	
	ON RUBBER	ON OUTRIGGERS	ON RUBBER	ON OUTRIGGERS
5	9500	17000	11600	18000
6	7800	14500	10200	14500
8	5650	10250	8250	10250
10	4000	7700	6200	7700
12	3000	6550	4650	6550
14	2350	5550	3650	5550
16	1900	4550	2950	4550
18	1600	3950	2500	4050
20	1350	3350	2150	3650
22	1150	2950	1850	3300
24	1000	2550	1650	3100
26	850	2450	1450	2750
28	725	2175	1275	2500
30	625	1900	1125	2300
32	525	1725	1000	2100
34	425	1500	900	1950

10-FOOT BOOM EXTENSION - STRAIGHT OR OFFSET

BOOM EXT. ANGLE	MAIN BOOM ANGLE				
	0°	30°	45°	70°	
*1 0°	2250	2600	3200	5000	7000
115°	—	2400	2700	3500	4200
130°	—	2250	2500	3000	3300

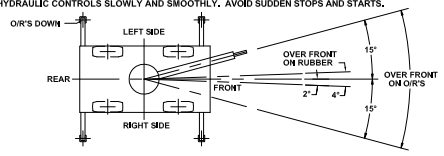
*USE 0° FOR STRAIGHT BOOM EXTENSION, † USE 0°, 15° OR 30° FOR OFFSET BOOM EXTENSION.
LOAD RADIUS IS THE HORIZONTAL DISTANCE FROM THE CENTER OF ROTATION OF THE UNLOADED CRANE TO THE VERTICAL LOAD LINE WITH THE LOAD APPLIED.
EXCEEDING CAPACITY RATINGS OR APPLYING SIDE LOADS TO THE BOOM OR BOOM EXTENSION IS MISUSE, IS HAZARDOUS, AND VOIDS WARRANTY.
CAUTION: BOOM EXTENSION LOADS MUST NOT EXCEED MAIN BOOM CAPACITY. DO NOT PICK & CARRY WITH LOADS ON BOOM EXTENSION. CAPACITIES ON OUTRIGGERS ARE 85% OF TIPPING LOADS. CAPACITIES ON RUBBER ARE 75% OF TIPPING LOADS. CAPACITIES BELOW BOLD LINE ARE LIMITED BY TIPPING, OTHER CAPACITIES ARE LIMITED BY STRUCTURAL OR HYDRAULIC CAPABILITY.

DECK CAPACITY 4000 LBS. WITH EMPTY BOOM RETRACTED OVER FRONT. DECK LOADS MUST BE CENTERED BEHIND FRONT AXLE. SPEED MUST BE LESS THAN 2 MPH. MAXIMUM TRAVEL 200 FT. IN 30 MINUTES ON SMOOTH PAVEMENT.

PICK AND CARRY WITH THE SHORTEST PRACTICAL BOOM. CENTERED OVER THE FRONT. OPERATE WITH THE BOOM AS LOW AS POSSIBLE, WITH THE LOAD CLOSE TO GROUND. PICK AND CARRY CAPACITIES ARE FOR SMOOTH, LEVEL PAVED SURFACE. THE BOOMS ON THIS UNIT ARE ALL STEEL AND HAVE NO LINE VOLTAGE RATING-NO ELECTRICAL INSULATION VALUE. LOAD HOOKS, DOWNHAUL WEIGHTS, HOOK BLOCKS AND OTHER LOAD HANDLING DEVICES SHALL BE CONSIDERED PART OF THE LOAD.

MAXIMUM HYDRAULIC PRESSURE 2600 PSL
BOOM EXTENSION DEDUCT: 100 LBS. WHEN STOWED ON BASE BOOM.
ENSURE ANTI-TWO BLOCK SWITCH IS FUNCTIONAL AFTER DEPLOYING OR STOWING BOOM EXTENSION.

- OPERATION:**
1. READ AND UNDERSTAND OPERATION MANUAL BEFORE OPERATING CRANE.
 2. CHECK LEVEL OF HYDRAULIC OIL AND ENGINE OIL DAILY.
 3. CHECK UNIT FOR VISIBLE DEFECTS AND LOOSE PARTS.
 4. SET VEHICLE PARK BRAKE SECURELY.
 5. EXTEND OUTRIGGERS TO SOLID FOOTING AND LEVEL CRANE.
 6. OPERATE ALL HYDRAULIC CONTROLS SLOWLY AND SMOOTHLY. AVOID SUDDEN STOPS AND STARTS.



THE LOAD HOIST LINE ON THIS UNIT MUST BE 9/16" DIA. 6 X 36-EP-RRL-IWRC WIRE ROPE (OR EQUIVALENT) WITH A MINIMUM BREAKING STRENGTH OF 31,500 LBS 125 FT LONG.

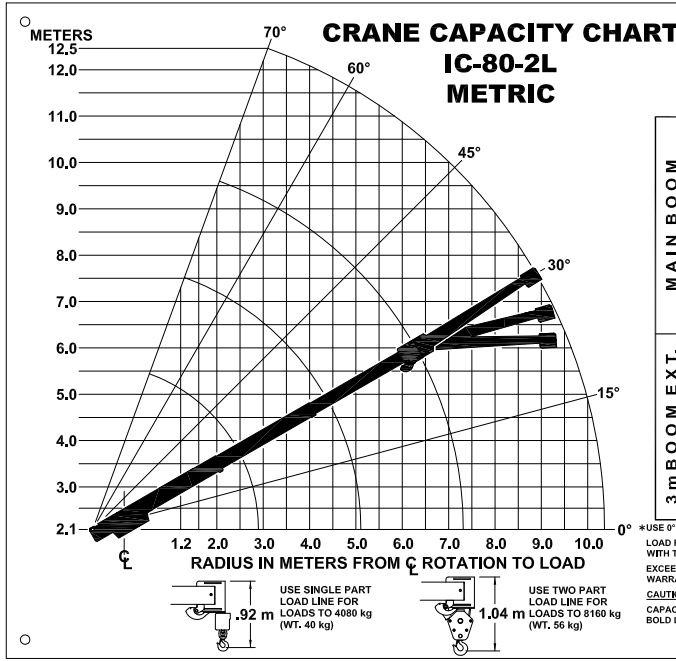
TIRE PRESSURE: 135 PSI FOR 10R15, 18PR, LR J, RADIAL TIRE
110 PSI FOR 10.00-15, 16 PR, LR H, BIAS TIRE
120 PSI FOR 36 X 11-15, 16 PR, BIAS, MINING TIRE.

TORQUE WHEEL NUTS TO 500 FT. LBS. (THESE CONDITIONS MUST BE MAINTAINED TO HANDLE RATED LOADS ON THIS CRANE)

MODEL NO. SERIAL NO. DATE OF MFR.

IC-80-2L

**BRODERSON MANUFACTURING
CORP. LENEXA, KANSAS** 65401158



CAPACITIES APPLY TO OPERATION ON FIRM LEVEL SURFACE

LOAD RADIUS METERS	MAIN BOOM OR EXTENSION CAPACITIES IN KILOGRAMS			
	360° ROTATION		OVER FRONT	
	ON RUBBER	ON OUTRIGGERS	ON RUBBER	ON OUTRIGGERS
1.5	4310	7710	5260	8160
2.0	3250	5990	4380	5990
2.5	2480	4480	3640	4500
3.0	1860	3540	2870	3540
3.5	1460	3090	2260	3090
4.0	1170	2720	1830	2720
4.5	980	2340	1520	2340
5.0	830	2000	1290	2000
5.5	720	1780	1130	1830
6.0	630	1560	1000	1680
6.5	550	1400	880	1550
7.3	450	1150	750	1400
8.0	380	1100	650	1230
9.0	290	890	530	1060
10.0	220	740	430	920
10.4	190	680	410	880

3 METER BOOM EXTENSION - STRAIGHT OR OFFSET

BOOM EXT. ANGLE	MAIN BOOM ANGLE				
	0°	30°	45°	60°	70°
*1 0°	1020	1180	1450	2260	3170
115°	—	1090	1220	1580	1900
130°	—	1020	1130	1360	1490

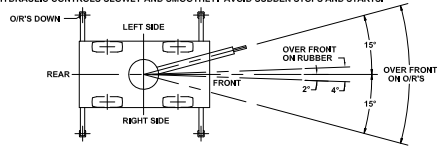
*USE 0° FOR STRAIGHT BOOM EXTENSION, † USE 0°, 15° OR 30° FOR OFFSET BOOM EXTENSION.
LOAD RADIUS IS THE HORIZONTAL DISTANCE FROM THE CENTER OF ROTATION OF THE UNLOADED CRANE TO THE VERTICAL LOAD LINE WITH THE LOAD APPLIED.
EXCEEDING CAPACITY RATINGS OR APPLYING SIDE LOADS TO THE BOOM OR BOOM EXTENSION IS MISUSE, IS HAZARDOUS, AND VOIDS WARRANTY.
CAUTION: BOOM EXTENSION LOADS MUST NOT EXCEED MAIN BOOM CAPACITY. DO NOT PICK & CARRY WITH LOADS ON BOOM EXTENSION. CAPACITIES ON OUTRIGGERS ARE 85% OF TIPPING LOADS. CAPACITIES ON RUBBER ARE 75% OF TIPPING LOADS. CAPACITIES BELOW BOLD LINE ARE LIMITED BY TIPPING, OTHER CAPACITIES ARE LIMITED BY STRUCTURAL OR HYDRAULIC CAPABILITY.

DECK CAPACITY 6350 kg. WITH EMPTY BOOM RETRACTED OVER FRONT. DECK LOADS MUST BE CENTERED BEHIND FRONT AXLE. SPEED MUST BE LESS THAN 3 km/h. MAXIMUM TRAVEL 60 m IN 30 MINUTES ON SMOOTH PAVEMENT.

PICK AND CARRY WITH THE SHORTEST PRACTICAL BOOM. CENTERED OVER THE FRONT. OPERATE WITH THE BOOM AS LOW AS POSSIBLE, WITH THE LOAD CLOSE TO GROUND. PICK AND CARRY CAPACITIES ARE FOR SMOOTH, LEVEL PAVED SURFACE. THE BOOMS ON THIS UNIT ARE ALL STEEL AND HAVE NO LINE VOLTAGE RATING-NO ELECTRICAL INSULATION VALUE. LOAD HOOKS, DOWNHAUL WEIGHTS, HOOK BLOCKS AND OTHER LOAD HANDLING DEVICES SHALL BE CONSIDERED PART OF THE LOAD.

MAXIMUM HYDRAULIC PRESSURE 180 BAR
BOOM EXTENSION DEDUCT: 45 kg WHEN STOWED ON BASE BOOM.
ENSURE ANTI-TWO BLOCK SWITCH IS FUNCTIONAL AFTER DEPLOYING OR STOWING BOOM EXTENSION.

- OPERATION:**
1. READ AND UNDERSTAND OPERATION MANUAL BEFORE OPERATING CRANE.
 2. CHECK LEVEL OF HYDRAULIC OIL AND ENGINE OIL DAILY.
 3. CHECK UNIT FOR VISIBLE DEFECTS AND LOOSE PARTS.
 4. SET VEHICLE PARK BRAKE SECURELY.
 5. EXTEND OUTRIGGERS TO SOLID FOOTING AND LEVEL CRANE.
 6. OPERATE ALL HYDRAULIC CONTROLS SLOWLY AND SMOOTHLY. AVOID SUDDEN STOPS AND STARTS.



THE LOAD HOIST LINE ON THIS UNIT MUST BE 14.3 mm DIA. 6 X 36-EP-RRL-IWRC WIRE ROPE (OR EQUIVALENT) WITH A MINIMUM BREAKING STRENGTH OF 140 kN 38 m LONG.

TIRE PRESSURE: 930 kPa FOR 10R15, 18PR, LR J, RADIAL TIRE
758 kPa FOR 10.00-15, 16 PR, LR H, BIAS TIRE
827 kPa FOR 36 X 11-15, 16 PR, BIAS, MINING TIRE.

TORQUE WHEEL NUTS TO 678 Nm (THESE CONDITIONS MUST BE MAINTAINED TO HANDLE RATED LOADS ON THIS CRANE)

MODEL NO. SERIAL NO. DATE OF MFR.

IC-80-2L

**BRODERSON MANUFACTURING
CORP. LENEXA, KANSAS** 65401182