

CAPACITIES APPLY TO OPERATION ON FIRM LEVEL SURFACE

RADIUS FEET	MAIN BOOM OR EXTENSION CAPACITIES IN POUNDS					
	360° ROTATION		OVER FRONT			
MAIN BOOM	5	9600	17000	11700	18000	
	6	7900	14500	10400	14500	
	8	5750	10250	8400	10250	
	10	4150	7700	6300	7700	
	12	3100	6550	4650	6550	
	14	2425	5550	3750	5550	
	16	2000	4650	3100	4650	
	18	1700	4100	2650	4150	
	20	1450	3550	2300	3800	
	22	1275	3000	2000	3000	
10' BOOM EXT.	24	1075	2800	1725	2800	
	26	925	2500	1500	2600	
	28	775	2200	1300	2400	
	30	675	2000	1150	2250	
	BOOM EXTENSION - STRAIGHT OR OFFSET					
	MAIN BOOM ANGLE					
	ANGLE	0°	30°	45°	60°	70°
	* 1 0°	2250	2600	3200	5000	7000
115°	--	2400	2700	3500	4200	
130°	--	2250	2500	3000	3300	

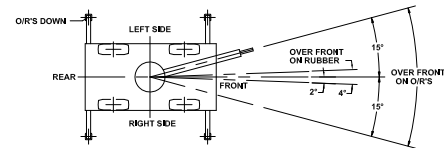
*USE 0° FOR STRAIGHT BOOM EXTENSION, *USE 0°, 15° OR 30° FOR OFFSET BOOM EXTENSION.
LOAD RADIUS IS THE HORIZONTAL DISTANCE FROM THE CENTER OF ROTATION OF THE UNLOADED CRANE TO THE VERTICAL LOAD LINE WITH THE LOAD APPLIED.
EXCEEDING CAPACITY RATINGS OR APPLYING SIDE LOADS TO THE BOOM OR BOOM EXTENSION IS MISUSE, IS HAZARDOUS, AND VOIDS WARRANTY.
CAUTION BOOM EXTENSION LOADS MUST NOT EXCEED MAIN BOOM CAPACITY. DO NOT PICK & CARRY WITH LOADS ON BOOM EXTENSION. CAPACITIES ON OUTRIGGERS ARE 85% OF TIPPING LOADS. CAPACITIES ON RUBBER ARE 75% OF TIPPING LOADS. CAPACITIES BELOW BOLD LINE ARE LIMITED BY TIPPING. OTHER CAPACITIES ARE LIMITED BY STRUCTURAL OR HYDRAULIC CAPABILITY.

DECK CAPACITY 14000 LBS. WITH EMPTY BOOM RETRACTED OVER FRONT. DECK LOADS MUST BE CENTERED BEHIND FRONT AXLE. SPEED MUST BE LESS THAN 2 MPH. MAXIMUM TRAVEL 200 FT. IN 30 MINUTES ON SMOOTH PAVEMENT.

PICK AND CARRY WITH THE SHORTEST PRACTICAL BOOM, CENTERED OVER THE FRONT. OPERATE WITH THE BOOM AS LOW AS POSSIBLE, WITH THE LOAD CLOSE TO GROUND. PICK AND CARRY CAPACITIES ARE FOR SMOOTH, LEVEL PAVED SURFACE. THE BOOMS ON THIS UNIT ARE ALL STEEL AND HAVE NO LINE VOLTAGE RATING-NO ELECTRICAL INSULATION VALUE. LOAD HOOKS, DOWNHAUL WEIGHTS, HOOK BLOCKS AND OTHER LOAD HANDLING DEVICES SHALL BE CONSIDERED PART OF THE LOAD.

MAXIMUM HYDRAULIC PRESSURE 2600 PSI
BOOM EXTENSION DEDUCT: 100 LBS. WHEN STOWED ON BASE BOOM.
ENSURE ANTI-TWO BLOCK SWITCH IS FUNCTIONAL AFTER DEPLOYING OR STOWING BOOM EXTENSION.

- OPERATION:
1. READ AND UNDERSTAND OPERATION MANUAL BEFORE OPERATING CRANE.
 2. CHECK LEVEL OF HYDRAULIC OIL AND ENGINE OIL DAILY.
 3. CHECK UNIT FOR VISIBLE DEFECTS AND LOOSE PARTS.
 4. SET VEHICLE PARK BRAKE SECURELY.
 5. EXTEND OUTRIGGERS TO SOLID FOOTING AND LEVEL CRANE.
 6. OPERATE ALL HYDRAULIC CONTROLS SLOWLY AND SMOOTHLY. AVOID SUDDEN STOPS AND STARTS.



THE LOAD HOIST LINE ON THIS UNIT MUST BE 9/16" DIA. 6 X 36-EP-RR-L4WRC WIRE ROPE (OR EQUIVALENT) WITH A MINIMUM BREAKING STRENGTH OF 31,500 LBS 125 FT LONG.

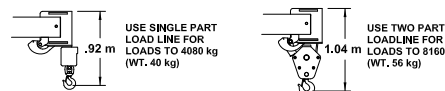
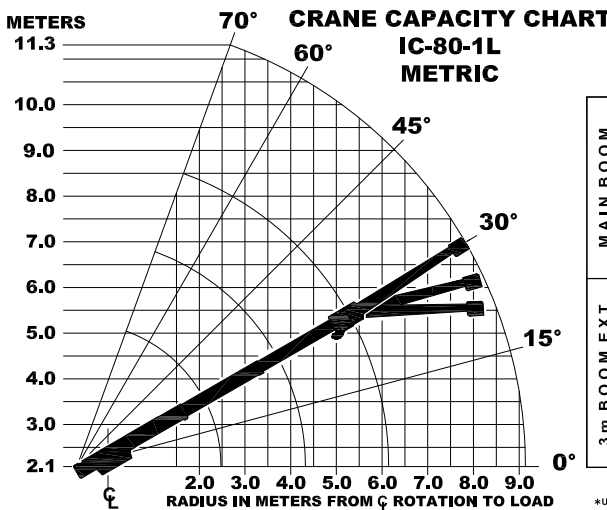
TIRE PRESSURE: 135 PSI FOR 10R15, 16PR, LR J, RADIAL TIRE
110 PSI FOR 10.00-15, 16 PR, LR H, BIAS TIRE
120 PSI FOR 36 X 11-15, 16 PR, BIAS, MINING TIRE.

TORQUE WHEEL NUTS TO 500 FT. LBS. (THESE CONDITIONS MUST BE MAINTAINED TO HANDLE RATED LOADS ON THIS CRANE)

MODEL NO.	SERIAL NO.	DATE OF MFR.
IC-80-1L		

**BRODERSON MANUFACTURING
CORP. LENEXA, KANSAS** 65401152

2-16



CAPACITIES APPLY TO OPERATION ON FIRM LEVEL SURFACE

RADIUS METERS	MAIN BOOM OR EXTENSION CAPACITIES IN KILOGRAMS					
	360° ROTATION		OVER FRONT			
MAIN BOOM	1.5	4350	7710	5300	8160	
	2.0	3290	5980	4460	5980	
	2.5	2520	4480	3710	4480	
	3.0	1920	3540	2930	3540	
	3.5	1500	3090	2260	3090	
	4.0	1210	2710	1850	2710	
	4.5	1010	2350	1580	2350	
	5.0	870	2050	1360	2050	
	5.5	760	1850	1190	1870	
	6.0	670	1640	1060	1750	
3 m BOOM EXT.	6.5	600	1390	950	1390	
	7.0	530	1310	840	1310	
	8.0	410	1110	660	1160	
	9.1	300	900	520	1020	
	3 METER BOOM EXTENSION - STRAIGHT OR OFFSET					
	MAIN BOOM ANGLE					
	ANGLE	0°	30°	45°	60°	70°
	* 1 0°	1020	1180	1450	2260	3170
115°	--	1090	1220	1580	1900	
130°	--	1020	1130	1360	1490	

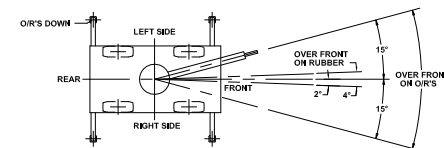
*USE 0° FOR STRAIGHT BOOM EXTENSION, *USE 0°, 15° OR 30° FOR OFFSET BOOM EXTENSION.
LOAD RADIUS IS THE HORIZONTAL DISTANCE FROM THE CENTER OF ROTATION OF THE UNLOADED CRANE TO THE VERTICAL LOAD LINE WITH THE LOAD APPLIED.
EXCEEDING CAPACITY RATINGS OR APPLYING SIDE LOADS TO THE BOOM OR BOOM EXTENSION IS MISUSE, IS HAZARDOUS, AND VOIDS WARRANTY.
CAUTION BOOM EXTENSION LOADS MUST NOT EXCEED MAIN BOOM CAPACITY. DO NOT PICK & CARRY WITH LOADS ON BOOM EXTENSION. CAPACITIES ON OUTRIGGERS ARE 85% OF TIPPING LOADS. CAPACITIES ON RUBBER ARE 75% OF TIPPING LOADS. CAPACITIES BELOW BOLD LINE ARE LIMITED BY TIPPING. OTHER CAPACITIES ARE LIMITED BY STRUCTURAL OR HYDRAULIC CAPABILITY.

DECK CAPACITY 6350 kg. WITH EMPTY BOOM RETRACTED OVER FRONT. DECK LOADS MUST BE CENTERED BEHIND FRONT AXLE. SPEED MUST BE LESS THAN 3 km/h. MAXIMUM TRAVEL 60 METERS IN 30 MINUTES ON SMOOTH PAVEMENT.

PICK AND CARRY WITH THE SHORTEST PRACTICAL BOOM, CENTERED OVER THE FRONT. OPERATE WITH THE BOOM AS LOW AS POSSIBLE, WITH THE LOAD CLOSE TO GROUND. PICK AND CARRY CAPACITIES ARE FOR SMOOTH, LEVEL PAVED SURFACE. THE BOOMS ON THIS UNIT ARE ALL STEEL AND HAVE NO LINE VOLTAGE RATING-NO ELECTRICAL INSULATION VALUE. LOAD HOOKS, DOWNHAUL WEIGHTS, HOOK BLOCKS AND OTHER LOAD HANDLING DEVICES SHALL BE CONSIDERED PART OF THE LOAD.

MAXIMUM HYDRAULIC PRESSURE 179 BAR.
BOOM EXTENSION DEDUCT: 45 kg WHEN STOWED ON BASE BOOM.
ENSURE ANTI-TWO BLOCK SWITCH IS FUNCTIONAL AFTER DEPLOYING OR STOWING BOOM EXTENSION.

- OPERATION:
1. READ AND UNDERSTAND OPERATION MANUAL BEFORE OPERATING CRANE.
 2. CHECK LEVEL OF HYDRAULIC OIL AND ENGINE OIL DAILY.
 3. CHECK UNIT FOR VISIBLE DEFECTS AND LOOSE PARTS.
 4. SET VEHICLE PARK BRAKE SECURELY.
 5. EXTEND OUTRIGGERS TO SOLID FOOTING AND LEVEL CRANE.
 6. OPERATE ALL HYDRAULIC CONTROLS SLOWLY AND SMOOTHLY. AVOID SUDDEN STOPS AND STARTS.



THE LOAD HOIST LINE ON THIS UNIT MUST BE 14.3 mm DIA. 6 X 36-EP-RR-L4WRC WIRE ROPE (OR EQUIVALENT) WITH A MINIMUM BREAKING STRENGTH OF 140 kN 38 m LONG.

TIRE PRESSURE: 930 kPa FOR 10R15, 16PR, LR J, RADIAL TIRE
755 kPa FOR 10.00-15, 16 PR, LR H, BIAS TIRE
827 kPa FOR 36 X 11-15, 16 PR, BIAS, MINING TIRE.

TORQUE WHEEL NUTS TO 678 Nm (THESE CONDITIONS MUST BE MAINTAINED TO HANDLE RATED LOADS ON THIS CRANE)

MODEL NO.	SERIAL NO.	DATE OF MFR.
IC-80-1L		

**BRODERSON MANUFACTURING
CORP. LENEXA, KANSAS** 65401176