

RIGGER LIFT R120

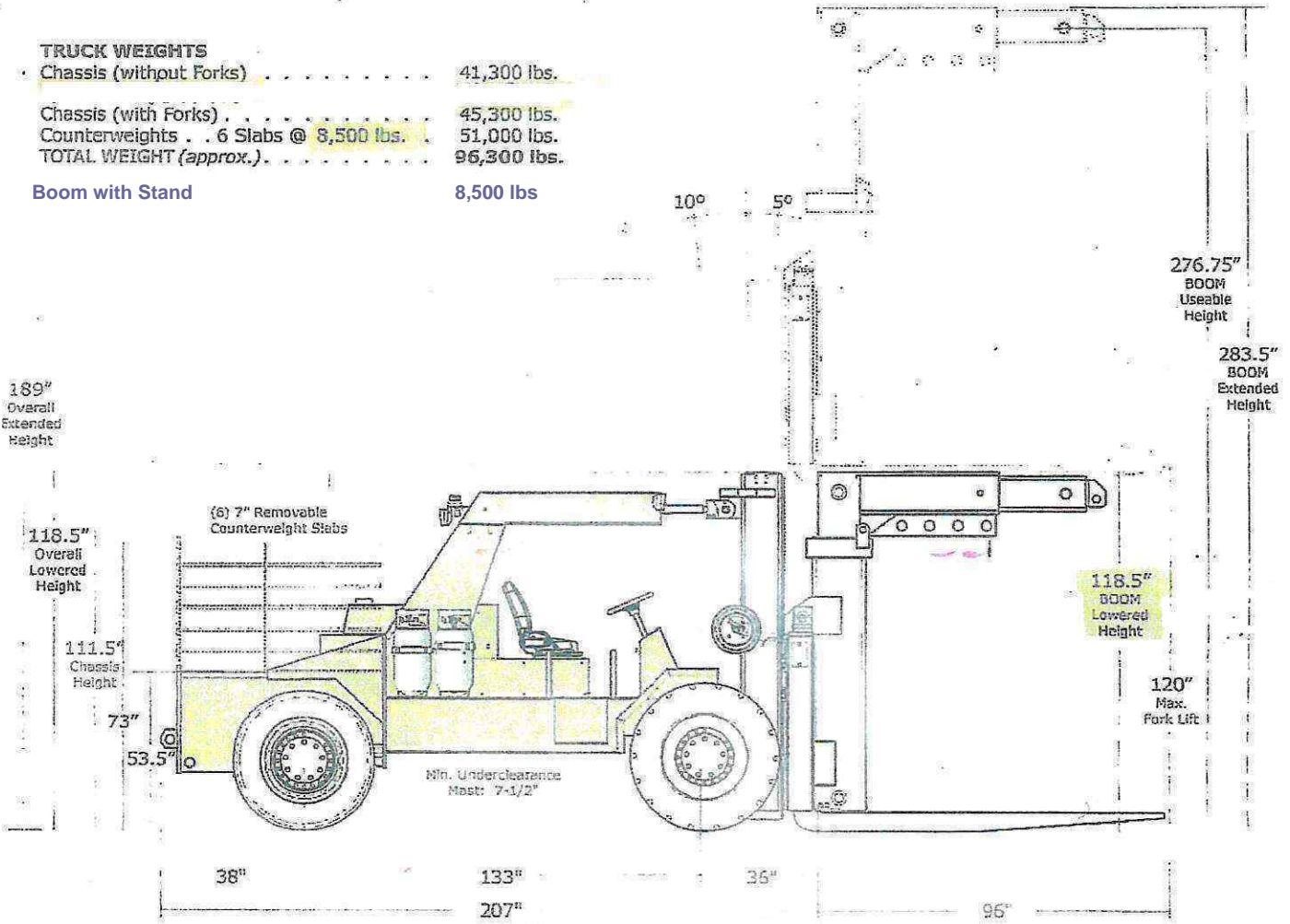
By Klasic

120,000 lbs. @ 24 in. Load Centre

TRUCK WEIGHTS

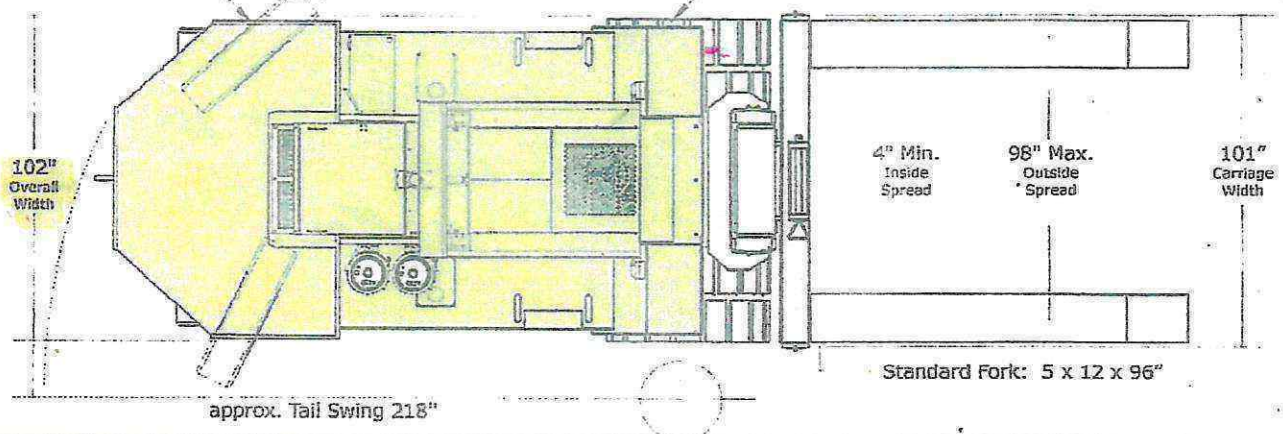
Chassis (without Forks)	41,300 lbs.
Chassis (with Forks)	45,300 lbs.
Counterweights . . . 6 Slabs @ 8,500 lbs.	51,000 lbs.
TOTAL WEIGHT (approx.)	96,300 lbs.

Boom with Stand 8,500 lbs



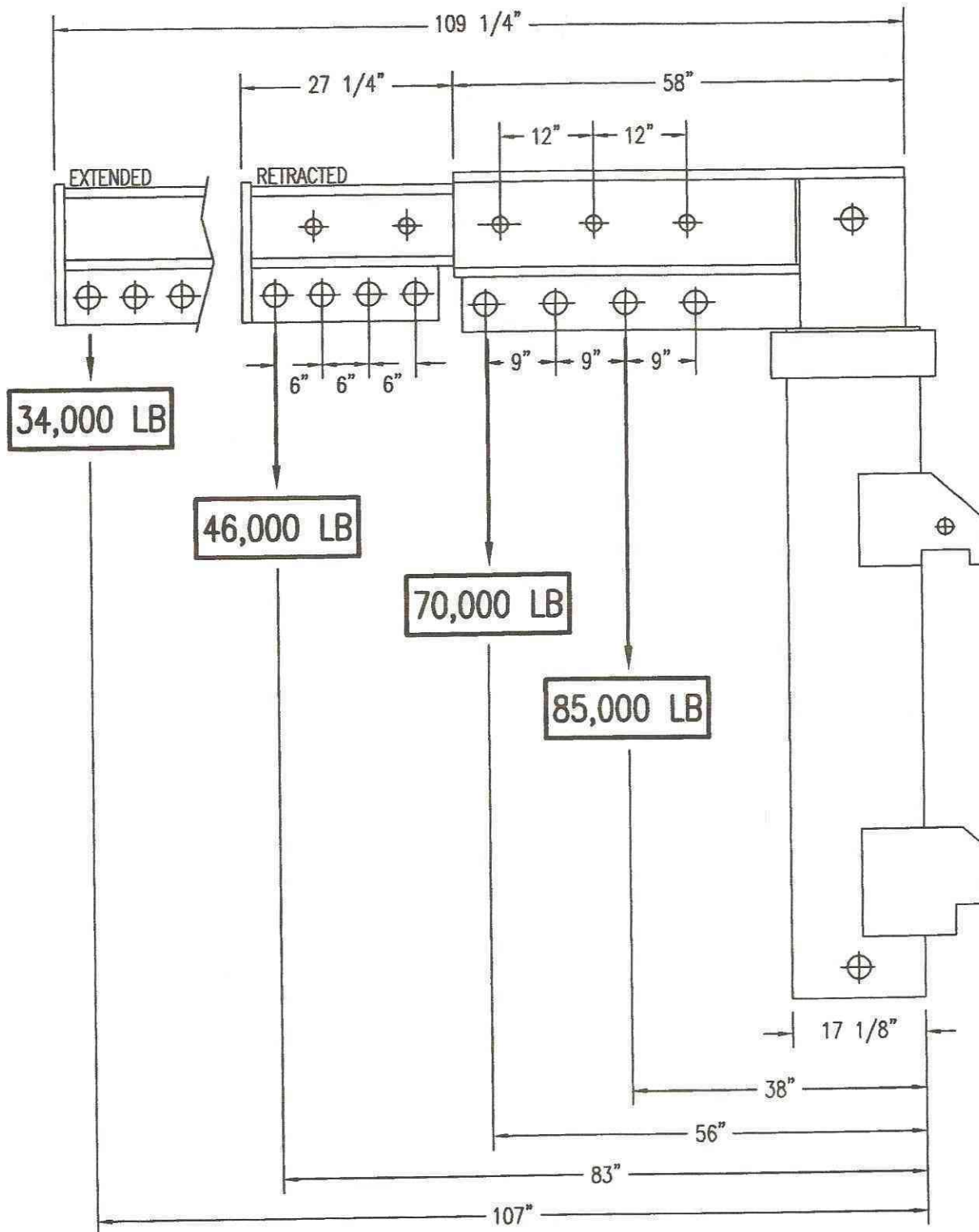
SOLID Steer Tires: 13.00x20 (Smooth)

SOLID (Single) Drive Tires: Ø48" x 28" Width x 9" Thickness



MODEL: BM80

S/N: 47008



NOTE: THE WEIGHTS OF ALL LOAD HANDLING DEVICES ARE CONSIDERED PART OF THE LOAD TO BE LIFTED AND MUST BE SUBTRACTED FROM THE ABOVE CAPACITIES.

SPEED MUST NOT EXCEED 1 MPH

NOTE!

LOAD CAPACITIES ARE BASED ON STRUCTURAL STRENGTH ONLY, NOT TIPPING